

MFR Equipment Recovery and Replacement Process

A. Objective

The MFR Equipment Recovery and Replacement Process outlines the procedure for MFR partners to replenish or recover medical equipment and supplies utilized during a MFR event.

B. Background Information

The MFR Program recognizes that there could be some financial implications to our MFR partners with the delivery of high quality patient care. The MFR Program has identified a need to support agencies who have limited funding for equipment and supply replacement, especially with respect to soft/consumable supplies.

MFR agencies are ultimately responsible for the purchase of initial equipment and the medical supplies necessary to deliver the level of service they choose (SFA, FMR, EMR, PCP, ACP).

C. Replacement Processes

i. Consumables Replacement Process for All MFR Agencies

When a MFR agency uses consumables at an event;

- a. Alberta MFR recommends that on-scene MFR practitioners, work with the attending EMS crew or an EMS Supervisor to replace routine consumables. This does not include medications or oxygen. This applies to both AHS Direct Delivery and Contracted EMS Services provincially.

It is recognized that had MFR not been available to respond, EMS' consumables would have been used at the event. This on-scene exchange cannot delay transport of the patient.

- b. If a reasonable effort was made and the supplies cannot be retrieved, qualifying MFR agencies, with ten or less full time employees (<10 FTE) per deployment location, can submit an **Agency Support Request** to the AHS MFR team via the MFR Portal. The form can be found under Resources or by clicking [here](#). Agencies should also ensure a MFR Patient Care Report is submitted through the usual processes.

MFR reserves the right to determine the appropriateness of the request and may defer large orders for consideration under the annual MFR Training & Equipment Fund.

ii. Equipment Recovery Process

If the EMS crew transported the patient with MFR equipment;

- a. The MFR agency should make every effort to recover the equipment from the receiving facility wherever possible. This can be done directly with the receiving facility, through the EMS crew or through an EMS Supervisor. If the MFR agency is unsure which receiving facility the patient was taken to, they can ask the EMS crew, EMS Supervisor or they can contact their MFR Program Representative. The EMS Event number will be required.
- b. If a reasonable effort is made and equipment cannot be located, the agency should submit the **Agency Support Request** to the MFR Team to request replacement. Please include as much background and detail about the piece of equipment and efforts made to locate it. The EMS Event number will be required.
- c. The MFR Team will assist in finding the piece of equipment and in some circumstances, may be able to assist with funding replacement equipment. The decision will be made by the MFR Manager and will be based on factors such as program funding availability, the ability for the MFR Partner Agency to fund the replacement and the program's other prioritizing needs. *Please note: the agency must discuss with MFR prior to ordering and invoicing for the equipment replacement.*

iii. Equipment Broken on Scene

- a. If the equipment was broken on-scene and is no longer functional, the MFR agency can submit an **Agency Support Request** to the MFR Team via the MFR Portal. Please include as much background and detail about the piece of equipment and the circumstances of the incident. The EMS Event number will be required.
- b. The MFR Team will assist in finding the piece of equipment and in some circumstances, may assist with funding replacement equipment. The decision will be made by the MFR Team and will be based on factors such as program funding availability, the ability for the MFR Partner Agency to fund the replacement and the program's other prioritizing needs. *Please note: the agency must discuss with MFR prior to ordering and invoicing for the equipment replacement.*

iv. Other Potential MFR Funding Opportunities

There is an annual opportunity to apply for the *Alberta MFR Training and Equipment Fund*. The details of the MFR Fund are shared via the MFR Portal (www.AlbertaMFR.ca) and email. Qualifying agencies, with four or less full time employees (<4 FTE) per deployment location may apply for limited funding for patient care-related medical equipment and supplies if all of the above listed methods have been exhausted.

Abbreviations

AHS Alberta Health Services
AHS EMS Alberta Health Services Emergency Medical Services
EMS Emergency Medical Services
FTE Full Time Employee
MFR Alberta Medical First Response Program
MFRs Individuals who are Medical First Responders

Definitions

Contract Service Provider is company that is contracted to AHS EMS

Direct Delivery is defined as an AHS EMS Ambulance

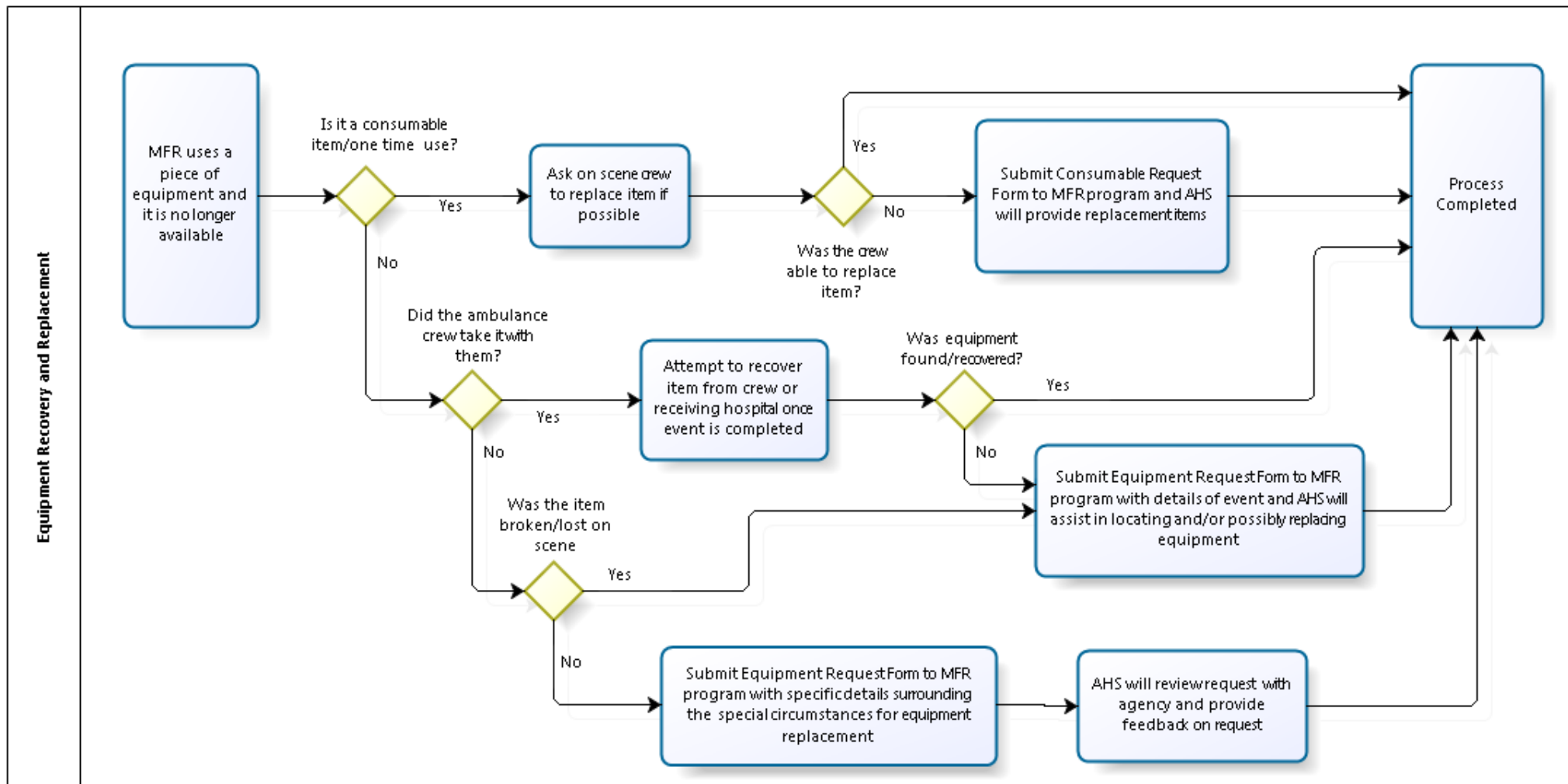
MFR Agency (Agencies) Organizations providing Medical First Response

MFR Portal is the website through which Alberta MFR communicates. www.AlbertaMFR.ca

Version Control

Date	Action	Rationale
August 30, 2018	<ul style="list-style-type: none"> • Formatting • Wording • Updates to process 	Document review & update
January 31, 2019	<ul style="list-style-type: none"> • Formatting • Wording • Updates to process 	Document review & update

MFR Equipment Recovery and Replacement Process



ALBERTA MFR'S APPROVED REPLACEMENT & REPLENISHMENT LIST OF ROUTINE CONSUMABLE SUPPLIES

- | | |
|--|--|
| <ol style="list-style-type: none"> 1) AIRWAY NASOPHARYNGEAL 6.0 32FR OUTER 2) AIRWAY NASOPHARYNGEAL PVC 28FR 7.0MM 3) AIRWAY ORAL GUEDEL 50MM LIGHT BLUE 4) AIRWAY ORAL GUEDEL DISPOSABLE CLEAN SIZE 1 VIOLET 60MM 5) AIRWAY ORAL GUEDEL DISPOSABLE CLEAN SIZE 2 WHITE 70MM 6) AIRWAY ORAL GUEDEL DISPOSABLE CLEAN SIZE 3 GREEN 80MM 7) AIRWAY ORAL GUEDEL DISPOSABLE CLEAN SIZE 4 YELLOW 90MM 8) AIRWAY ORAL GUEDEL DISPOSABLE CLEAN SIZE 5 RED 100MM 9) AIRWAY ORAL GUEDEL DISPOSABLE CLEAN SIZE 6 WATER-GREEN 110MM 10) BAG PATIENT BELONGING PLASTIC REGULAR 1.25ML COTTON DRAWSTRING HANDLE WHITE 11) BAG VOMIT CLEAR EMS 12) BANDAGE ADHESIVE PLASTIC .75 X 3 INCH 13) BANDAGE CONFORMING STRETCH SYNTHETIC 10CM X 3.75M STERILE 14) BANDAGE TRIANGULAR 40INX40IN COTTON 15) CANNULA NASAL AIRLIFE ADULT STANDARD NONFLARED TIP 7FT U-CONNECT CRUSH RESISTANT LUMEN TUBING 16) CANNULA OXYGEN PEDIATRIC W/TUBING NONFLARE TIP 17) CATHETER IV ACTIVE SAFETY WINGED OPEN SYSTEM BLUE 22GX25MM JELCO PROTECTIV PLUS WITH BLOOD CONTROL 18) CATHETER IV ACTIVE SAFETY WINGED OPEN SYSTEM GRAY 16GX32MM JELCO PROTECTIV PLUS WITH BLOOD CONTROL 19) CATHETER IV ACTIVE SAFETY WINGED OPEN SYSTEM GREEN 18GX32MM JELCO PROTECTIV PLUS WITH BLOOD CONTROL 20) CATHETER IV ACTIVE SAFETY WINGED OPEN SYSTEM PINK 20GX32MM JELCO PROTECTIV PLUS WITH BLOOD CONTROL 21) CATHETER IV ACTIVE SAFETY WINGED OPEN SYSTEM YELLOW 24GX19MM JELCO PROTECTIV PLUS WITH BLOOD CONTROL 22) CATHETER SUCTION DEPTH MARK WITH CONTROL VALVE 10FR 23) COLLAR IMMOBILIZATION STIFNECK PEDIATRIC 24) COLLAR IMMOBILIZATION STIFNECK SELECT ADJUSTABLE ADULT 25) CONTAINER SHARP 2 QUART IN-PATIENT ROOM MAILBOX STYLE LID RED 26) CONTAINER SHARPS 2.5 X 4.5 X 8.75 INCH 1QT HAND OPERATION TRANSPORTABLE LEAK RESISTANT SCREW CAP SHUTTLE SNAP CLOSURE RED 27) CONTROL HIGH/LOW BLOOD GLUCOSE ACCU-CHEK (1H/1L/BX) 28) DISINFECTANT SURFACE SPRAY 946ML READY TO USE METRIGUARD 29) DRESSING ABSORBENT CLEAR ACRYLIC TEGADERM CLEAR ABS OVAL 7.6CMX9.5CM 30) DRESSING TRANSPARENT TEGADERM FRAME STYLE 6.0 X 7.0CM 31) ELECTRODE ECG CARDIAC DIAGNOSTIC ALLIGATOR CLIP SILVER CHLORIDE SNAP SOLID GEL FOAM 32) ELECTRODE PACING/DEFIBRILLATION QUICK COMBO 33) ELECTRODE PACING/DEFIBRILLATION QUICK-COMBO PEDIATRIC | <ol style="list-style-type: none"> 34) GLOVE EXAM NITRILE PF SENSICARE 12 INCH CUFF LARGE 35) GLOVE EXAM NITRILE PF SENSICARE 12 INCH CUFF MEDIUM 36) GLOVE EXAM NITRILE PF SENSICARE 12 INCH CUFF SMALL 37) GLOVE EXAM NITRILE PF SENSICARE 12 INCH CUFF XLARGE 38) GOWN ISOLATION AAMI 3 KNIT CUFF TIE CLOSURE PRIMAGARD YELLOW 39) HOLDER TUBE ENDOTRACHEAL ADULT EMS 40) HOLDER TUBE ENDOTRACHEAL PED EMS 41) JELLY LUBRICANT WATER SOLUBLE FOILPAC 3GR 42) KIT OBSTETRICAL FOR EMS 43) LANCET ONETOUCH SURESOFT GENTLE SINGLE USE 44) MASK FACE PROCEDURE EARLOOP BLUE 45) MASK INFLATABLE W/VALVE ADULT LRG 46) MASK INFLATABLE W/VALVE ADULT MED 47) MASK INFLATABLE W/VALVE ADULT SMALL 48) MASK INFLATABLE W/VALVE NEONATE 49) MASK INFLATABLE W/VALVE TODDLER 50) MASK LARYNGEAL UNIQUE SINGLE USE SIZE 1 LF 51) MASK LARYNGEAL UNIQUE SINGLE USE SIZE 2 LF 52) MASK LARYNGEAL UNIQUE SINGLE USE SIZE 3 LF 53) MASK OXYGEN ADULT HIGH CONCENTRATION NON-REBREATHER 3-IN-1 WITH SAFETY VENT & 7 FOOT TUBING VINYL UNDER-THE-CHIN STYLE 54) MASK OXYGEN PEDIATRIC HIGH CONCENTRATION REBREATHER WITH 7 FOOT CRUSH-RESISTANT TUBING VINYL UNDER-THE-CHIN STYLE 55) NEBULIZER AEROSOL AIRLIFE MISTY MAX ADULT 10 ML WITH MASK 7FT TUBING 56) NEBULIZER AEROSOL AIRLIFE MISTY MAX BAFFLED TEE MOUTHPIECE U/CONNECT-IT 7FT TUBING 6IN FLEXTUBE 57) NEBULIZER AEROSOL AIRLIFE MISTY MAX PEDIATRIC 10 ML WITH MASK SMALL VOLUME 7FT TUBING 58) NEEDLE BLUNT FILL TIP 18 GAUGE X 1.5 INCH WITH BLUNT FILTER 59) NEEDLE HYPODERMIC SAFETY GLIDE 21 GAUGE X 1.5 INCH 60) NEEDLE HYPODERMIC SAFETY GLIDE 22 GAUGE X 1.5 INCH 61) NEEDLE HYPODERMIC SAFETY GLIDE 25 GAUGE X 1 INCH 62) PACK COLD INSTANT DELUXE DISPOSABLE 6.75X9IN 63) PAD ABDOMINAL STERILE 8 X 10 INCH 64) PENLIGHT DISP 65) PREP PAD STERILE 70% ISOPROPYL ALCOHOL MEDIUM 66) PREP WIPE CHLORHEXIDINE GLUCONATE 2% AND 70% ISOPROPYL ALCOHOL MEDIUM 67) RAZOR PREP SINGLE BLADE SINGLE EDGE FIXED HEAD W/ COMB SHORT HANDLE GREEN 68) REMOVER NAIL POLISH PAD 69) RESUSCITATOR BAG DISPOSABLE PEDIATRIC EMS |
|--|--|

ALBERTA MFR'S APPROVED REPLACEMENT & REPLENISHMENT LIST OF ROUTINE CONSUMABLE SUPPLIES

- | | |
|--|---|
| <ul style="list-style-type: none"> 70) RESUSCITATOR MANUAL ADULT BAG VALVE MASK 71) SANITIZER HAND WATERLESS FOAM 50ML 72) SANITIZER HAND WATERLESS FOAM PUMP 400ML 73) SCISSOR UNIVERSAL 8IN BLACK 74) SET IV ADMIN CLEARLINK 2Y'S 10 DROPS/ML 260CM LL 75) SHEET BURN FOR EMS 60IN X 90IN 76) SOLUTION INJECTION WATER 20ML WITHOUT PRESERVATIVE 77) SOLUTION INTRAVENOUS 0.9% SODIUM CHLORIDE 10ML VIAL 78) SOLUTION IRRIG NACL 0.9% 500ML POUR BTL 79) SOLUTION IRRIG WATER STERILE 500ML POUR BTL 80) SOLUTION IRRIGATION SALINE 100ML STERILE 81) SOLUTION IV NACL 0.9% 1000ML 82) SOLUTION IV NACL 0.9% 250ML 83) SOLUTION IV NACL 0.9% 500ML VIAFLEX CONTAINER 84) SOLUTION IV NACL 0.9% 50ML MINIBAG PK/4 85) SPLINT FERNOFRAC 86) SPLINT FINGER ZIMFOAM 1IN X 18IN FOAM-BACKED 87) SPLINT ORTHOPEDIC 36IN X4IN RADIOLUCENT WATERPROOF COMPACT REUSABLE CHARCOAL GRAY 88) SPONGE GAUZE NON-WOVEN 4 PLY 2X2IN NON-STERILE DUSOFT 89) SPONGE GAUZE NON-WOVEN 4 PLY 4X4IN NON-STERILE DUSOFT | <ul style="list-style-type: none"> 90) SPONGE GAUZE NON-WOVEN 4 PLY 4X4IN STERILE DUSOFT 91) SYRINGE 3ML WITH ATTACHED SAFETY GLIDE NEEDLE 25 GAUGE X 0.625 INCH 92) SYRINGE LARYNGEAL TUBE LL 100ML EMS 93) SYRINGE LUER LOCK TIP 10ML 94) SYRINGE LUER LOCK TIP 1ML 95) SYRINGE LUER LOCK TIP 30ML 96) SYRINGE LUER LOCK TIP 3ML 97) SYRINGE LUER LOCK TIP 5ML 98) TAPE DRESSING TRANSPORE HYPOALLERGENIC PLASTIC POROUS 1IN X 10YD CLEAR 99) TAPE SURGICAL DURAPORE HYPOALLERGENIC SILK-LIKE 1IN X 10YD 100) TAPE SURGICAL DURAPORE HYPOALLERGENIC SILK-LIKE 2IN X 10YD 101) TEST STRIP BLOOD GLUCOSE ACCU-CHEK INFORM II 102) TOURNIQUET VACUTAINER STRETCH LATEX FREE 18X1 INCH INDIVIDUAL ROLLS 103) TUBE LARYNGEAL AIRWAY SZ 3 YELLOW EMS 104) TUBE LARYNGEAL AIRWAY SZ 4 RED EMS 105) TUBE LARYNGEAL AIRWAY SZ 5 PURPLE EMS 106) UNDERPAD REGULAR 43X61CM DISP BLUE (CS12/BG25) 107) WIPE DISINFECTANT PCS OXIDIZING 1000PPM 108) WIPE VIROX ACCELERATED HYDROGEN PEROXIDE |
|--|---|

ITEMS UNABLE TO BE REPLACED OR REPLENISHED AS A ROUTINE CONSUMABLES

- 1) AED
- 2) AED Pads
- 3) AED Batteries
- 4) Any items that exceed the Agency's level of service
- 5) Medications
- 6) Non-Disposable equipment Requests
(spine board, scoop etc.)

These items may qualify for replacement or reimbursement through the MFR Training & Equipment Fund

The Medical First Response (MFR) Program reserves the right to limit the quantity of items being replenished.

MFR does not provide agencies with their initial stock of supplies. Items that have expired will be considered for replacement on a case by case basis.